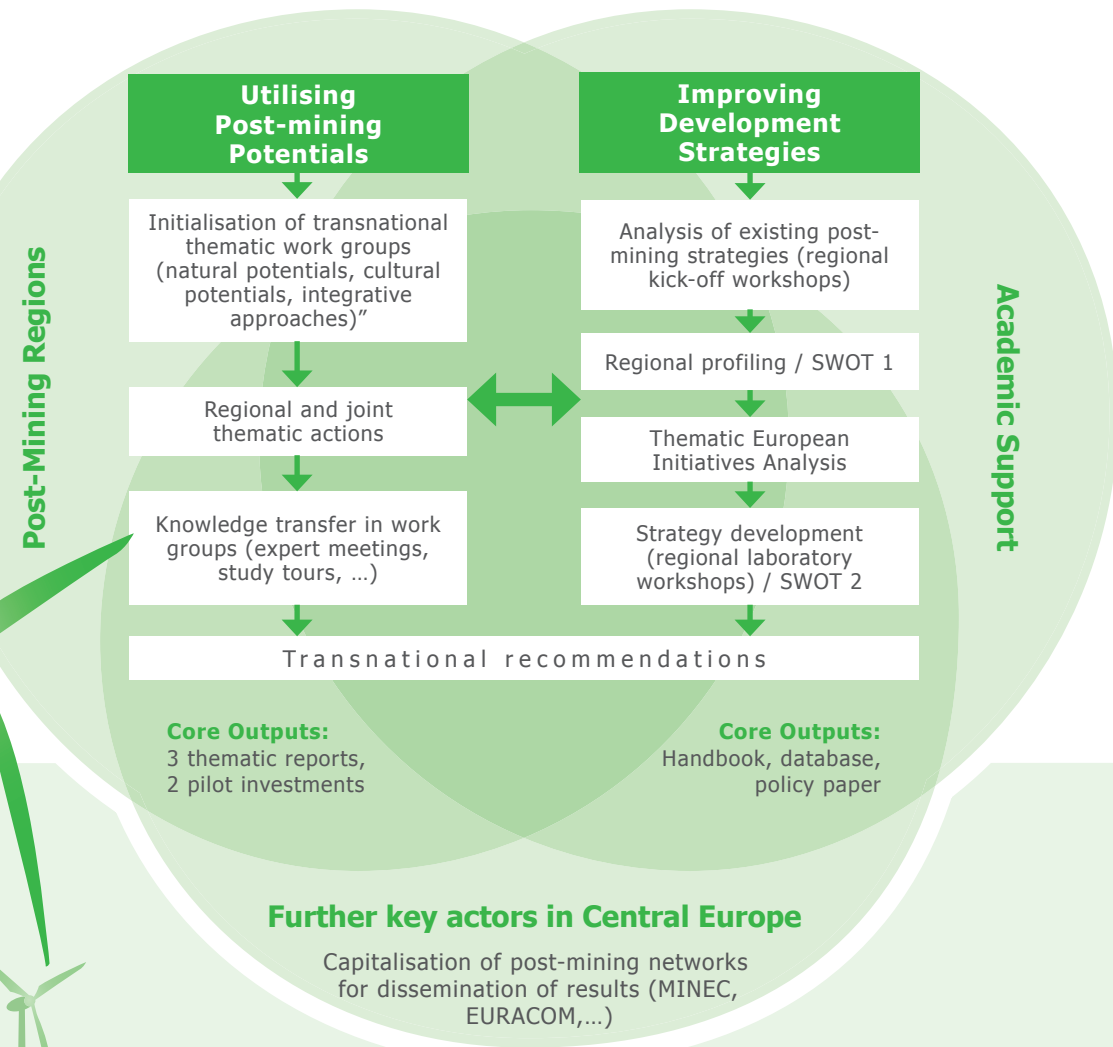


Work flow



Project coordination:
District of Zwickau, Economic Region of Chemnitz-Zwickau
 Dezernat V, project ReSource
 Pf. 100176
 DE - 08067 Zwickau, Germany

Carsten Debes
 e-mail: carsten.debes@landkreis-zwickau.de
 phone: +49 (0) 375-272 15 92
www.resource-ce.eu

ReSource is linked to the Central and Eastern European Network of Mining Cities and Regions M·I·N·E·C:
www.minec.org



ReSource project is implemented through the CENTRAL EUROPE Programme co-financed by the ERDF.

This documentation reflects the authors views. The programme bodies are not liable for any use that may be made of the information contained therein.



New Growth from Old Mines
Exploring Post-mining Potentials in Central Europe

Why

The end of mining does not just leave brownfields and polluted land behind which must be cleaned up and regenerated. Affected cities and regions face major challenges to find new economic perspectives.

Resources from the mining industry can provide the basis for innovative development strategies: Mining dumps can be used for biomass production and wind parks, mine waters as sources for geothermal energy, conveyer bridges as event backdrops – thus problems become opportunities.

Exceptional efforts are needed to make use of such potentials. Creative concepts are necessary. Strategies must be developed. Economic feasibility has to be proven.

Former mining regions in Central Europe share a number of similar potentials. This is where ReSource comes in: As an EU project it offers an optimal platform for exchange and for the joint development of new approaches; by carefully aimed publicity measures it increases the political awareness of opportunities in post-mining landscapes.

How

The ReSource project "Utilisation of Post-mining Potentials for Sustainable Re-development in Central European Mining Regions" is supported by the European territorial cooperation programme »Central Europe«. It commenced in January 2009 and runs until March 2012.

For implementation of the project three thematic work groups are established. They focus on following post-mining opportunities:

- natural potentials (biomass, geothermal energy)
- cultural potentials (mining heritage/ change of mentality, tourist routes)
- integrative approaches (masterplanning, competitions).

What

ReSource is an initiative of Central European regions characterized by small and medium-sized towns in which the mining industry is declining or has recently come to its end. The aim is to restore the competitiveness of these structurally disadvantaged areas and stimulate sustainable development. Adopting a wholly unique approach, the project encourages an understanding of the physical and mental legacy of mining as resources to be exploited. The following key results will be produced by ReSource:

- thematic reports and internet database on utilisation options for post-mining potentials,
- handbook comprising innovative methods for post-mining regional development,
- policy paper on post-mining development perspectives for national and European decision-makers.

Pre-investment studies, pilot projects, competitions, summer schools and seminars serve as good-practice examples. These are jointly developed and managed within work groups. ReSource thus acts as a source of inspiration for Central Europe and helps to realize concrete results in affected regions.

Who

ReSource unites mining regions and research partners from five Central European countries:

Regional partners

District of Zwickau, Economic Region of Chemnitz-Zwickau (Lead Partner, Germany)

IBA Fürst-Pückler-Land (Germany)

Educational Institution of Employers Association Saxony-Anhalt (Germany)

Styrian Iron Route Association (Austria)

Microregion Sokolov - East (Czech Republic)

Town of Salgótarján (Hungary)

Regional Development Centre Zagorje (Slovenia)

Scientific partners

Leibniz Institute of Ecological and Regional Development Dresden (Germany)

Karl-Franzens University Graz (Austria)

Urban Planning Institute (Slovenia)